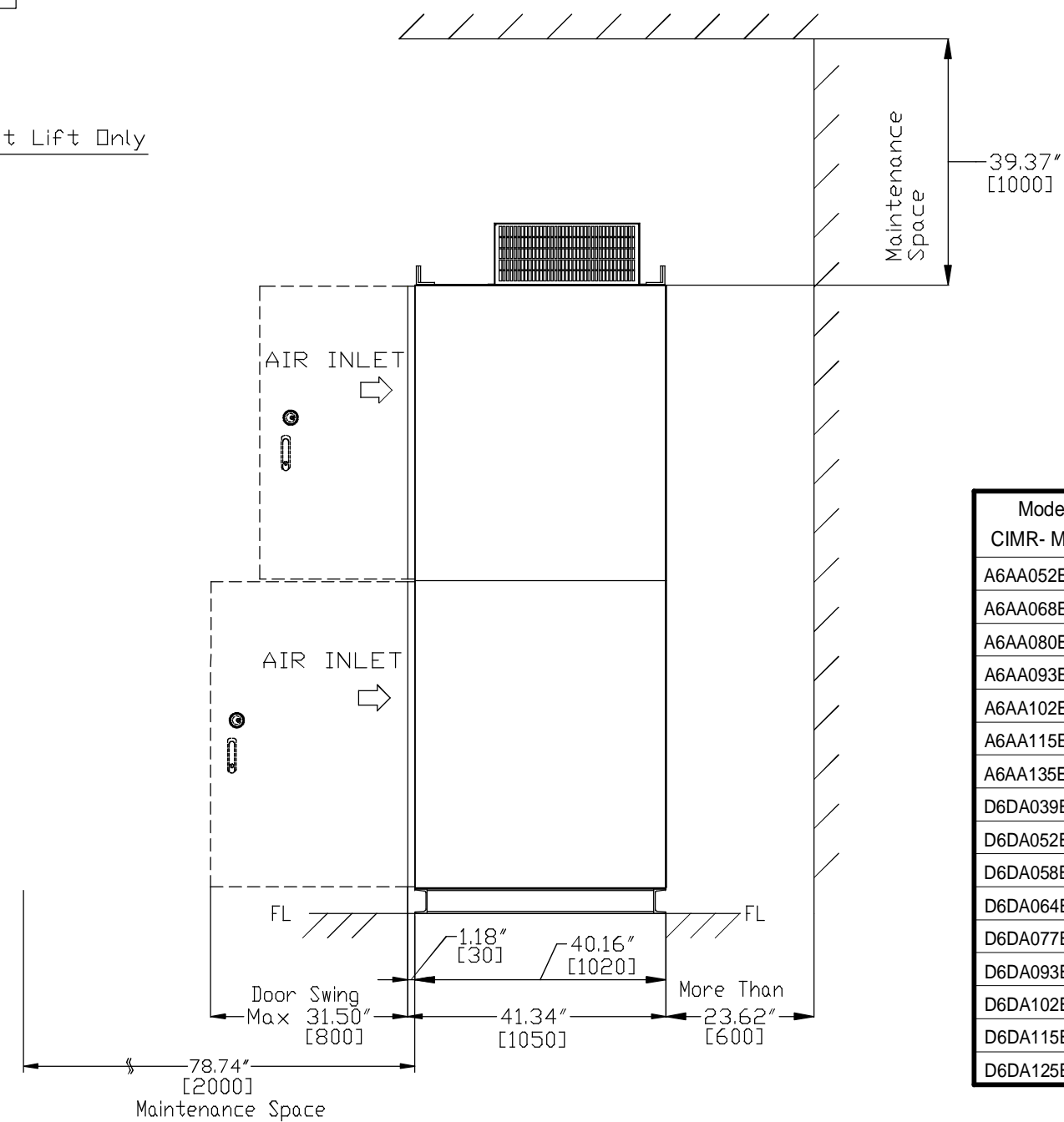
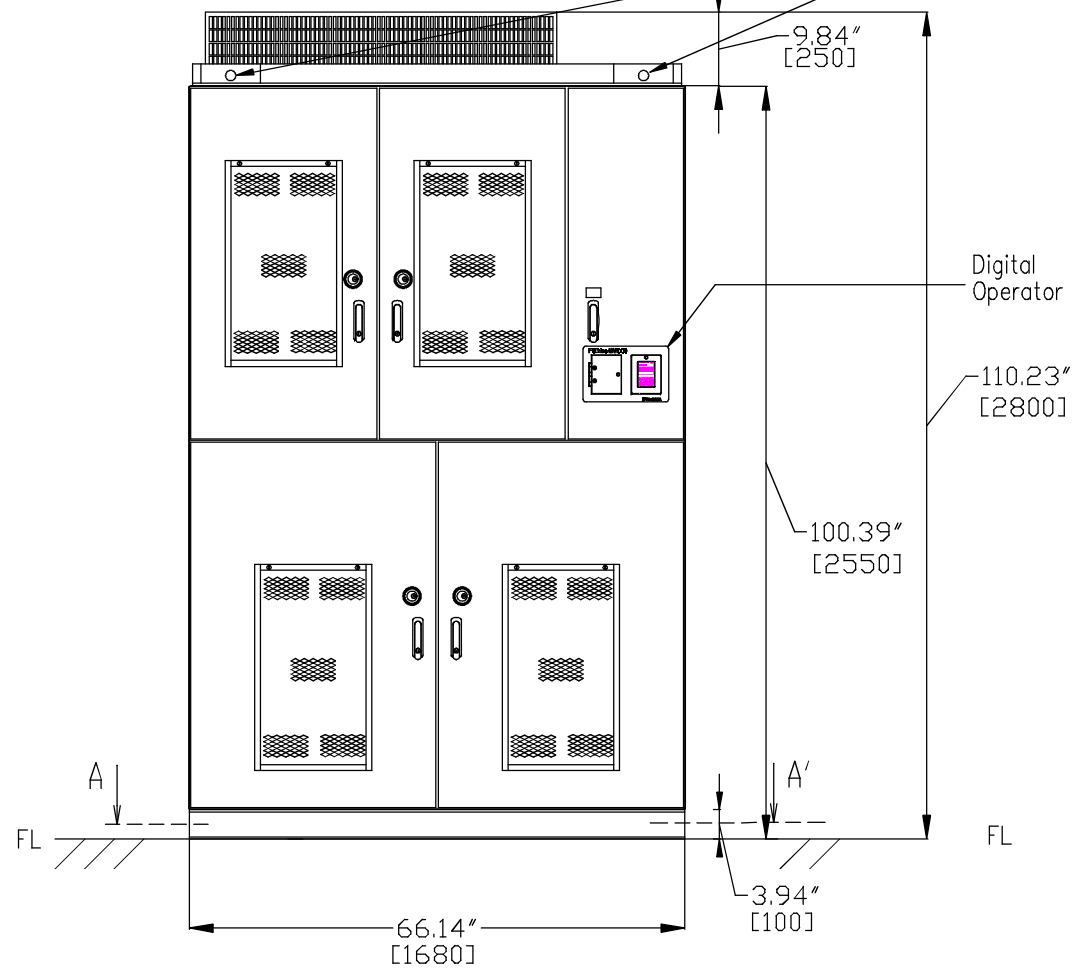
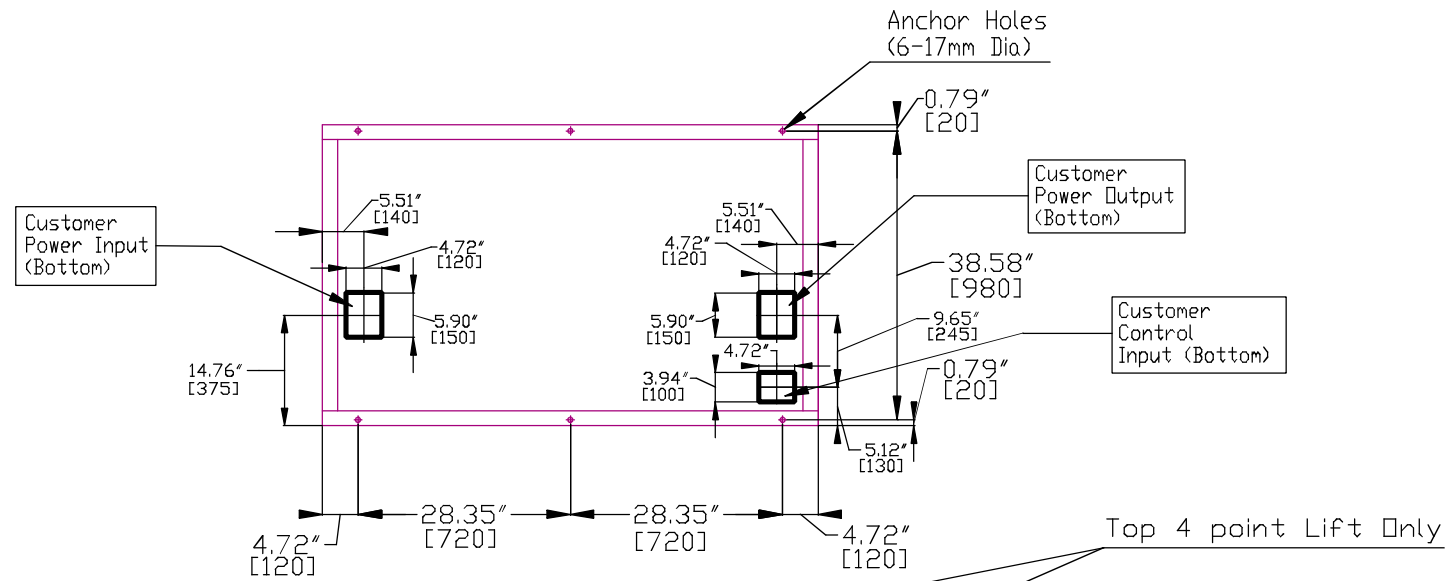


Section A-A'



Model #	Voltage 3 Ph (VAC)	Output Current (A)	Weight Lbs (Kg)	Heat Loss (W)
A6AA052E1AA	2400	52	5291 (2400)	5100
A6AA068E1AA		68		6600
A6AA080E1AA		80	5732 (2600)	7800
A6AA093E1AA		93		9300
A6AA102E1AA		102		10200
A6AA115E1AA		115	6172 (2800)	11400
A6AA135E1AA	135	13500		
D6DA039E1AA	4160	39	5291 (2400)	6600
D6DA052E1AA		52		9000
D6DA058E1AA		58	5732 (2600)	9900
D6DA064E1AA		64		11100
D6DA077E1AA		77		13200
D6DA093E1AA		93	6172 (2800)	16200
D6DA102E1AA	102	17700		
D6DA115E1AA	115	6172 (2800)	19800	
D6DA125E1AA	125		21600	

REV	DESCRIPTION	EC #	DRAWN BY	DATE
-	-	-	-	-
-	-	-	-	-
-	-	-	-	-
-	-	-	-	-

**For Reference Only**

**YASKAWA**

THIS DOCUMENT AND INFORMATION CONTAINED IN IT ARE CONFIDENTIAL, AND CANNOT BE COPIED OR DISCLOSED IN WHOLE OR IN PART WITHOUT THE EXPRESS WRITTEN CONSENT OF YASKAWA AMERICA, INC.

DRAWN: T Sasada	DATE: 03/23/12	TITLE: MV1000 Dimension Drawing
CHECKED: -	DATE: -	Frame Size 1
TECH: -	DATE: -	NEMA 1 IP40 ENCLOSURE
APPROVED: -	DATE: -	A6AA052 - 135, D6DA039 - 125
ORIGINAL DESIGN: -	DATE: -	SIZE: A REVISION: A PAGE: 1 of 1
		DRAWING #: DD.MV1K.FR1.N1